



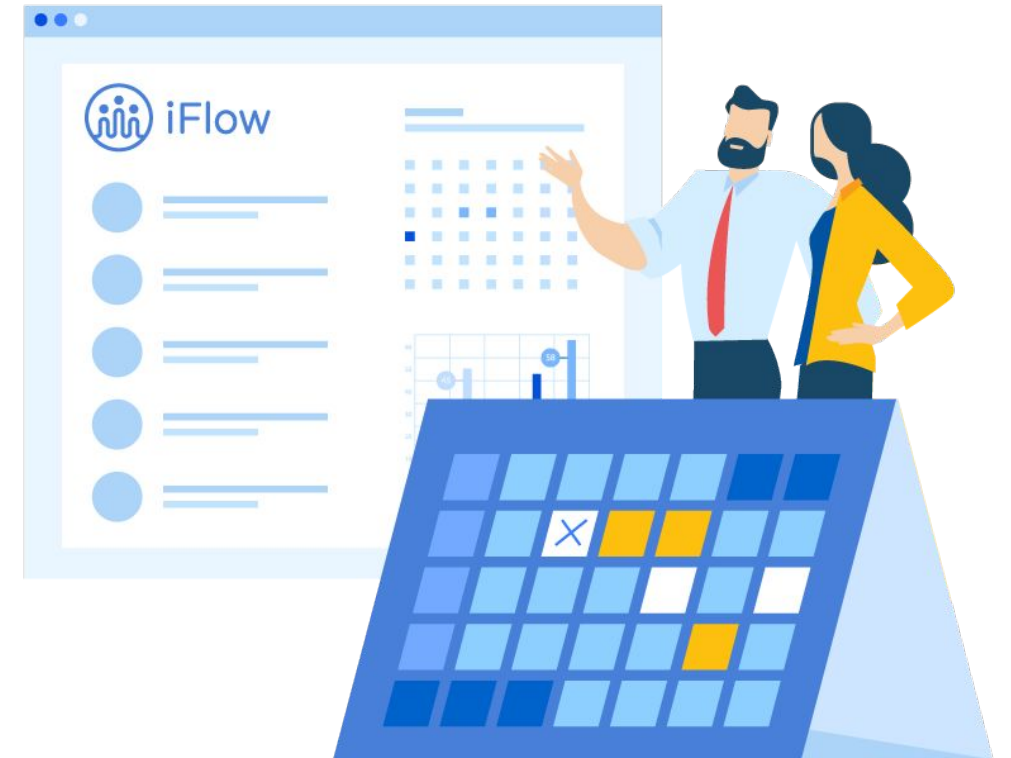
# Your complete attendance & HR solution

Easily manage your employees' information and their working hours wherever you are, from any device, in real-time.



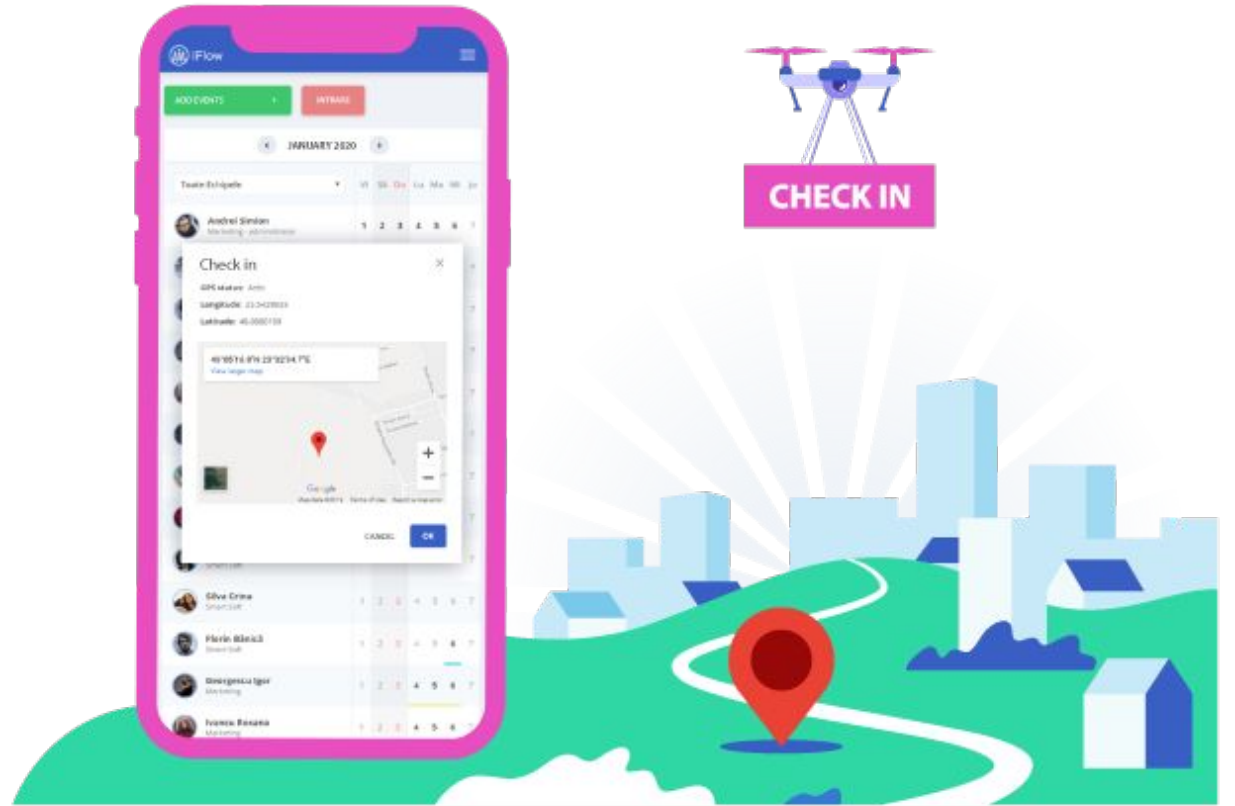
# What is iFlow?

- We know employees are the most valuable asset for every company, and that's why we developed iFlow in a way that will help you to easily manage your entire team.
- iFlow is the perfect assistant for your HR department. You can save precious time and keep your staff productive.
- Created and based especially on a cloud system, for you to be able to integrate it with any other software with a few clicks.



# Check-in/out from phone

- Employees can check-in/out from their phones or any other device with internet connection
- With every check-in/out of an employee the app registers the date, hour and exact GPS location
- iFlow makes your Timesheet digital
- Managers, team-leaders or members can see in real-time who is present or absent



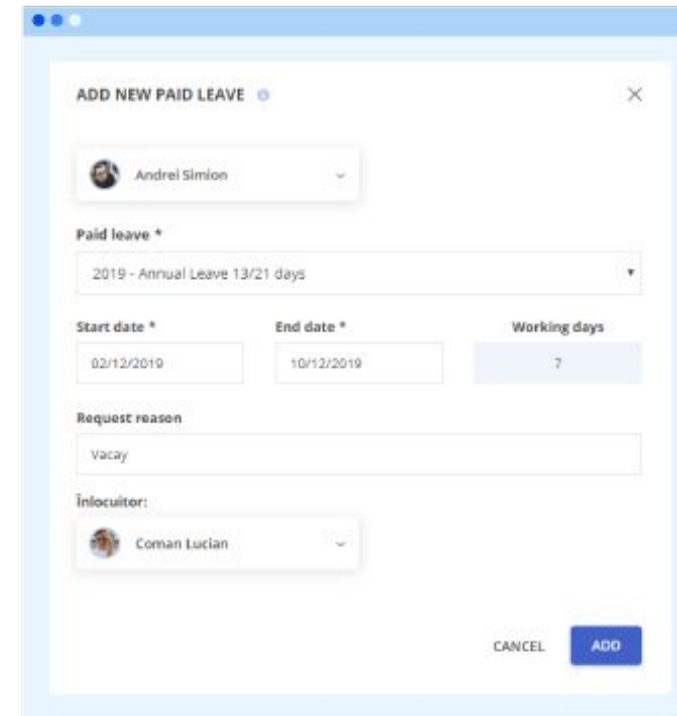
# “Work Schedule” module

- Efficiently plan your employees' work schedule, by creating all the personalized work shifts you need
- You decide who has access to the planning online, in real-time
- It is simple to monitor employees and oversee overtime hours



# Employee Self-Service

- Employees can add requests for different events, for example paid leave days or time-off
- Approve or deny requests in real-time
- Employees are aware of their team-members schedule
- Due to the viewing options available for each employee, you can avoid paid leaves overlap



The screenshot shows a web-based form titled "ADD NEW PAID LEAVE" with a close button (X) in the top right corner. The form contains the following fields:

- Employee:** A dropdown menu showing "Andrei Simion" with a profile picture icon.
- Paid leave \*:** A dropdown menu showing "2019 - Annual Leave 13/21 days".
- Start date \*:** A date input field showing "02/12/2019".
- End date \*:** A date input field showing "10/12/2019".
- Working days:** A text input field showing "7".
- Request reason:** A text input field showing "Vacay".
- Inlocuitor:** A dropdown menu showing "Coman Lucian" with a profile picture icon.

At the bottom right of the form, there are two buttons: "CANCEL" and "ADD".



# Track leaves in iFlow

- Digital tracking and monitoring of your employees leaves
- Each employee can check, in his profile, the number of paid leave days available
- Requests for leaves need to be approved by a superior
- A replacement can be selected easily
- You receive email notifications for any new request



# Reports and locations

- With iFlow, all the information is updated in real-time and can be edited or filtered easily
- Check-in/out feature offers you full control with GPS location tracking
- Managers can see in real-time how many employees are working on every location



# Real-time Data

Employees and managers have clear perspective over all the main issues:

- Who is working tomorrow?
- Was anyone late today?
- How many paid leave days do I have left?
- How many hours did the employee work?





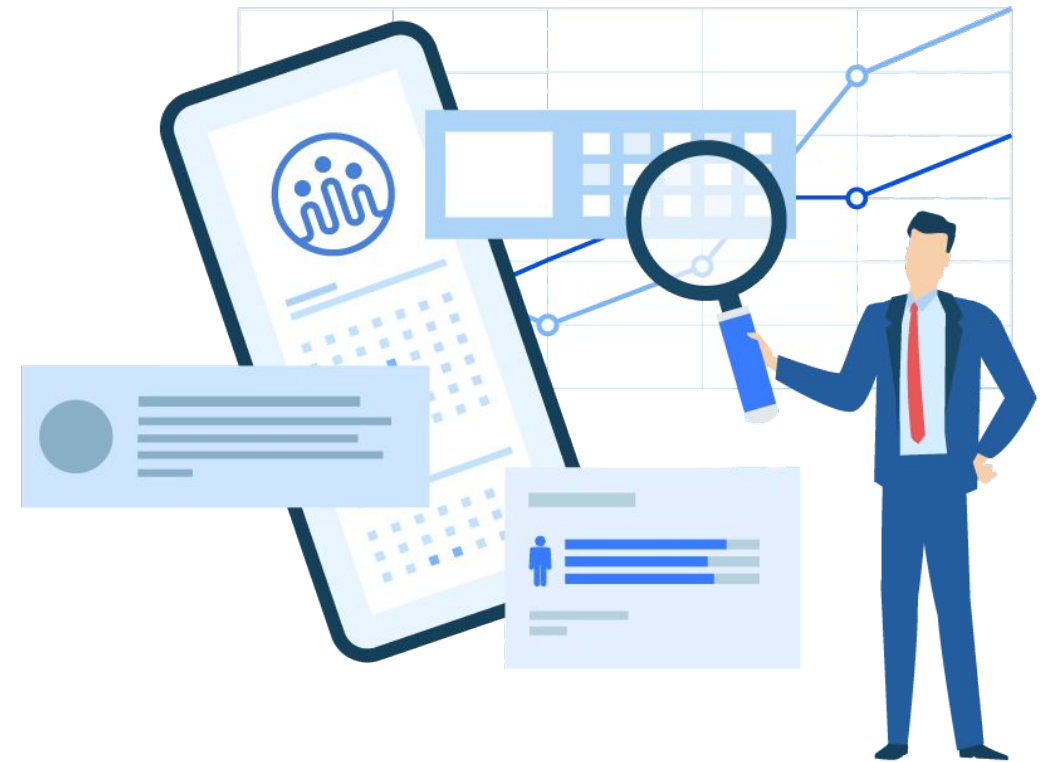
# Managers have the perfect overview

- The app was designed with care by our experts to give you the right information at the right time.
- The iFlow system keeps you informed. You receive an alert or a notification for any error identified in your user's actions.
- A simple click on your notification will get you directly to the solution of your problem.



# Details are one click away

- Clicking on something from your overview image will get you straight to a detailed version
- In iFlow managing multiple employees is as easy as managing one employee
- Identify and resolve any problem easily
- Check the Change-log to see what changes were made and by who



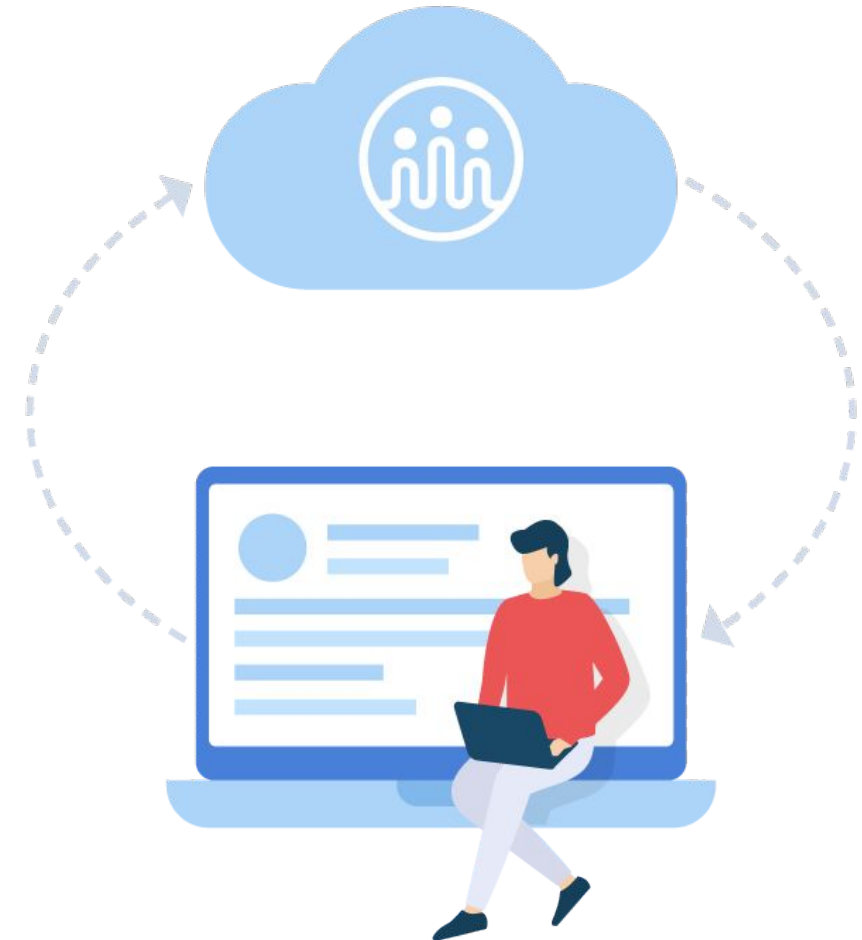
# Integration with Payroll Software

- All the working hours of your employees can be exported easily to your Payroll software
- The data includes overtime hours, as well as night, weekend or holiday shifts
- Information is complete and precise, ready to integrate with your software



# Cloud-based SAS

- iFlow is a cloud-based app, meaning that all your information is saved daily and stored safely without the need of extra infrastructure
- Your IT department doesn't need to worry about back-ups



# Transition to iFlow

- We know that the road to digital can be bumpy and that implementing a new system takes time.
- Based on our own experience, we created a transition plan that we already implemented successfully in companies from medium-sized to large ones.



# Technical Support

- You are guided in your journey with iFlow from the start.
- The professional team is ready to assist you.
- All your questions regarding the app get a clear & fast answer.
- All your problems have a solution in iFlow.



# The plan to implement iFlow - on short

1

Implement iFlow for one team.



2

Assistance and reporting



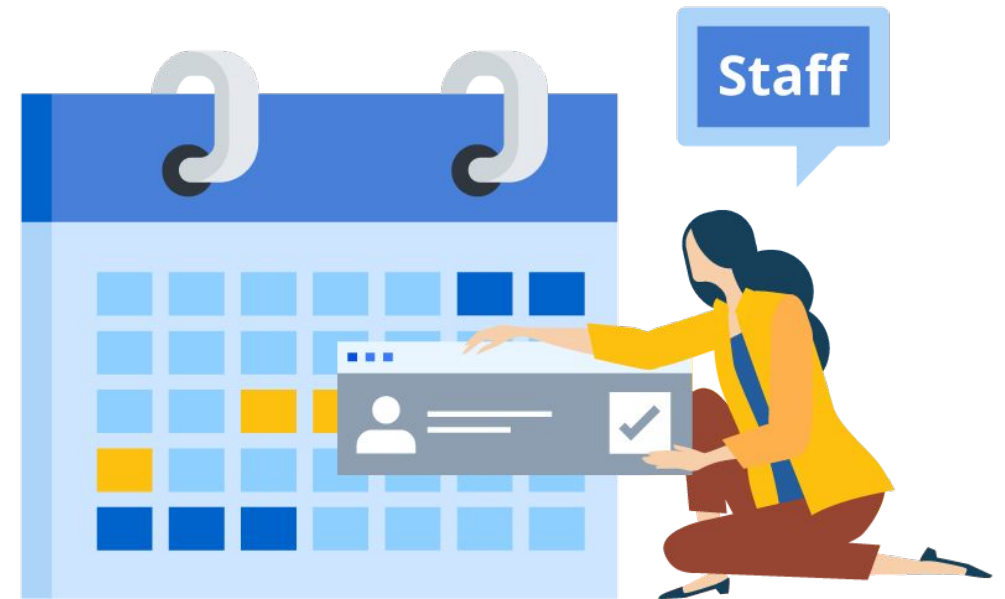
3

Adding more teams to iFlow step by step.



# You are busy? We can help you set up iFlow!

- We will import your employees from any file format
- We create your company's structure
- You have access to a complete documentation
- Technical support for the employees that manage your account





# GDPR and Secure Data

- We have a strict policy to protect personal information
- We use file transfer encryption
- We don't share your data with anyone
- We control our employees access to the database
- For testing we are using an anonymous database



# Pricing

- Monthly or yearly subscription calculated based on the number of employees
- The price is 1.5€ per employee/month
- The subscription includes updates, technical support on phone and daily data back-up

